

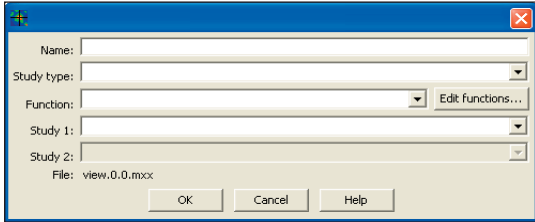


Major Release, July 2005

New Features for SignalPro v.6

Create Your Own Hybrid Area Study

EDX SignalPro offers you more area-wide study types than any other planning tool. With v.6, you can have even more flexibility – make your own study! A new dialog box helps you to apply functions to existing area studies, or to set up Boolean “and/or” comparisons between two existing area studies.



Calculate Your Intermodulation from Within SignalPro

New to SignalPro v.6, intermodulation calculations are now included in SignalPro!

Making the Most of Your Clutter Database

More and more engineers are using clutter databases for enhanced prediction accuracy. Several propagation models included with EDX SignalPro have been updated to make use of clutter attenuation values in their calculations, including the 802.16 IEEE SUI models, the Custom model and the Cost-231 model.

Attenuation values for your clutter databases can now be adjusted with related measurement/site survey data for additional location-specific accuracy.

New pass-through clutter option allows the effects of clutter to be taken into account across the entire path between transmitter and receiver. Both clutter height and attenuation/distance are included for highest accuracy.

Mapping Your Results

Additional mapping features were added to further enhance the EDX SignalPro user interface. Updated support for MapInfo® and new grid coordinate systems were added.

Easing Your Equipment Parameter Settings

EDX SignalPro provides the most detailed parameter settings for your equipment – giving you maximum flexibility and accuracy in your predictions. If you would like assistance in setting these parameters, EDX is building a library of manufacturer-specific settings. With this library, it's easy to set up your network parameters.

Maintaining Industry Standards

The ITU 1546 propagation model for systems operating from 30 MHz to 3 GHz is now included.

Use Templates For Study Settings

To further ease the creation of new projects, you can now use the settings in existing projects as templates for the new projects.

New Features for Network Design

A New Network Design Module

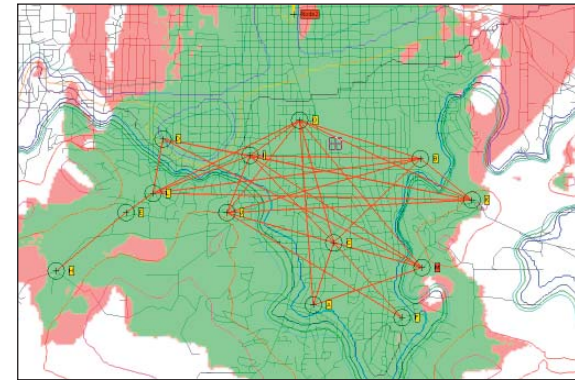
This carrier-class feature set adds on comprehensive capabilities that you need to deploy and manage wireless networks. Based on the previously known Fixed Broadband Module, Cellular/PCS Module, and 3G UMTS Module, the Network Design Module is appropriate for mobile, portable/nomadic, and fixed wireless networks. It includes the ability to consider frequency reuse/channel plans and perform technology-specific studies (TDMA/GSM/EDGE, CDMA/WCDMA/UMTS, OFDM and other spread spectrum). Further, the Network Design Module gives you automatic frequency planning, automatic traffic loading and automatic system layout.

Any technology, any frequency range, this module is a must-have for engineers responsible for managing and deploying complex wireless networks.

Identify the potential.

Coming in v.6.1 ...

- Innovating and expanded Mesh Network features!
- A new “Digital Audio Quality vs. C/I” study will be added for TSB88 recommendations
- Uplink and downlink data rate throughput will be included for each CPE.
- Plus More! Release date expected in Q4 2005!



Contact

EDX Wireless, LLC
PO Box 1547
Eugene, OR 97440-1547
USA

Tel: +1-541-345-0019
Fax: +1-541-345-8145
Email: info@edx.com
Web: www.edx.com