

Features

EDX .mcs Files

EDX has developed a robust and efficient file format for outdoor building databases and indoor floor plans – the .mcs format.

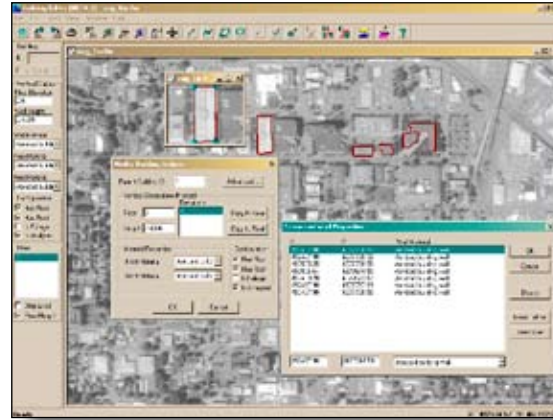
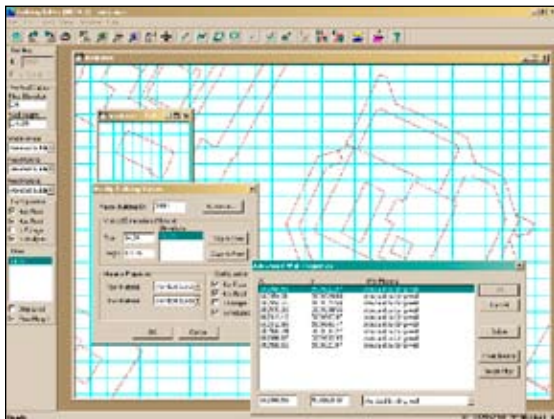
The .mcs files produced by the Building Editor can be used with the EDX wireless planning tools. The detailed parameters stored in the .mcs files, such as wall material, electrical characteristics, wall height and location, provide vital details that can greatly enhance the RF propagation prediction accuracy for microcell and indoor wireless systems.

Edit EDX .mcs Files

Building Editor makes it easy to manage indoor floor plans and outdoor building databases. With its familiar Windows graphical user interface, it gives you the convenience of mouse and toolbar functionality to create, import, and edit your building databases. You can easily modify wall height and material type, group walls together, and, with a single click, copy a floor plan to another floor.

Customize Your Display

Choose from several different display types for viewing your map. Most views can be shown either separately or simultaneously within distinct map windows.



Display types include:

- An entire .mcs database
- A selected building or structure
- Selected elements within a building, e.g. all elements at a particular elevation or floor level

Create & Display Databases from Scanned Images

You can also import raster images as background layers, then use the intuitive drawing tools to trace the elements you want to include in your building database, assigning wall height, wall material and electrical characteristics as you go.

Rotate & Scale Images

Make directional changes by rotating or using linear scaling on images. Re-scale images by selecting two points and dragging them to new locations on the map or by entering new coordinates for each.

Create EDX .mcs Files from AutoCAD Files

You can easily import AutoCAD® .dxf and .dwg files (file formats through AutoCAD 2002). The Building Editor displays the files then you decide which layers you want to import for your building database. The relevant layers can be imported one at a time, with each layer having independently defined height and wall material characteristics.

Building Editor

Snap-to-Grid

Enhanced accuracy is provided with the Snap-to-grid feature. It ensures that lines are straight and connected. You can specify your own grid spacing and orientation.

Grid Spacing

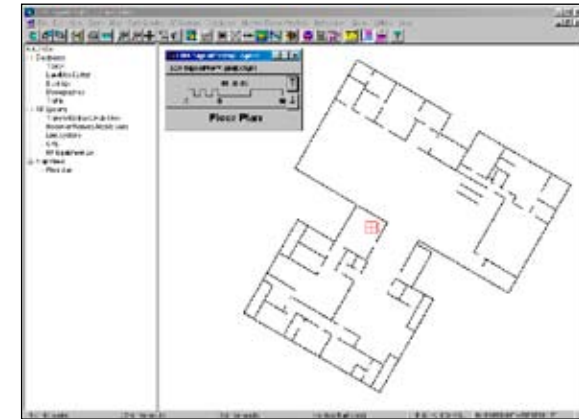
The grid can be viewed to illustrate spacing requirements and show distances between points, walls, or buildings.

Easy to Use with Windows®

All EDX software utilizes the Windows 98, 2000, NT, or XP graphical user interface, toolbars, right-click functions, and drag and drop features. You can print to any Windows compatible printer or plotter.

Export Files

Export files from the Building Editor as geo-coded .tif images for use with GIS mapping or other software.



Contact

EDX Wireless, LLC
PO Box 1547
Eugene, OR 97440-1547
USA

Tel: +1-541-345-0019
Fax: +1-541-345-8145
info@edx.com
www.edx.com